



IMAGES: Will Pryce

INTERCONTINENTAL

London Park Lane

THE ICONIC INTERCONTINENTAL LONDON PARK LANE IN MAYFAIR'S PARK LANE CONTINUES TO HEAP YET MORE LUXURY UPON LUXURY, WITH THE COMPLETION OF THE HOTEL'S NEW CAPITAL SUITE FOR PRESTIGIOUS BUSINESS MEETINGS, TOGETHER WITH THE CURRENT BEDROOM REFURBISHMENT UNVEILING THE STUNNING 'MAYFAIR COLLECTION' DESIGN.

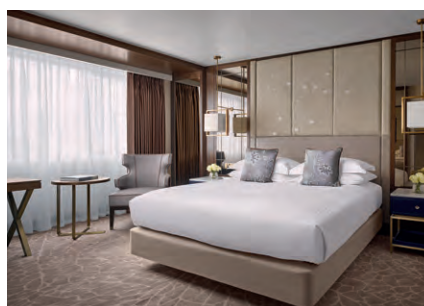
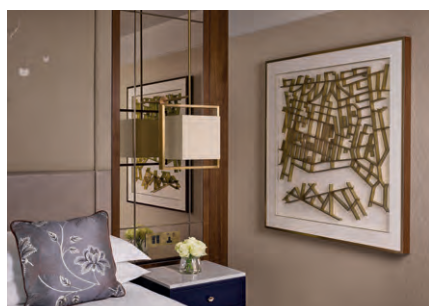


The £22m Mayfair Collection bedroom refurbishment across the third and fourth floors redefines the hotel's competitive position in the luxury market, with completion due in March 2020.

The refurbishment has seen a reduction in the number of bedrooms, and an increase in suites due to demand for the larger room types, particularly US and ME groups. The project includes the complete refurbishment of 121 bedrooms and bathrooms and the creation of 22 new suites.

Bedrooms and suites were designed by RPW, who also worked with the hotel on the Capital Suite and have a very good understanding of the identity of the hotel.

Main contractors for the current bedroom refurbishment programme are County Contractors who continue to build on their impressive 5 Star portfolio of projects. »



Hotels

“The refurbishment has seen a reduction in the number of bedrooms, and an increase in suites due to demand for the larger room types, particularly US and ME groups. The project includes the complete refurbishment of 121 bedrooms and bathrooms and the creation of 22 new suites.



Geared to cocooning guests' in luxurious materials, stylish design and comfort, the bedroom design features neutral shades with minimal pattern and brighter, accent colours on artwork, cushions and accessories.

The palette includes a selection of naturally luxurious materials, such as soft leathers, stone and walnut timbers as a basis for the colour schemes, resulting in a classic, natural and relaxing environment.

All materials and finishes are in keeping with the hotel location at the crossing of London's Royal Parks, with many design elements such as leaf and floral motifs reflecting the surrounding greenery.

The scheme also includes new electrical lighting power installations; adaptations to the existing sprinkler installation and the creation of a new design; replacement of all bedroom 4 pipe fan coil units, controls and actuation; the installation of a replacement



bathroom supply and extract adaptations, and the manufacture and installation of all fixed joinery, including new doors.

The hotel's overall upgrade commenced last year with the creation of the Capital Suite, launched in May following an investment of £3.3million. The first business suite of its kind, The Capital Suite, spanning 335sqm on the first floor, offers intelligent design, allowing various areas of the suite to

be separated based on guests' needs and desires, in addition to a separate entrance into the hotel and a private lift.

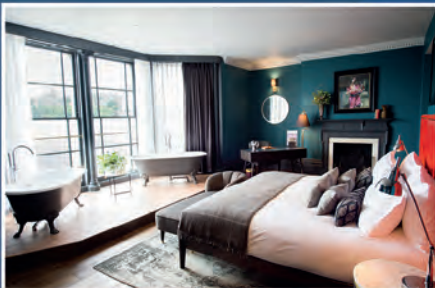
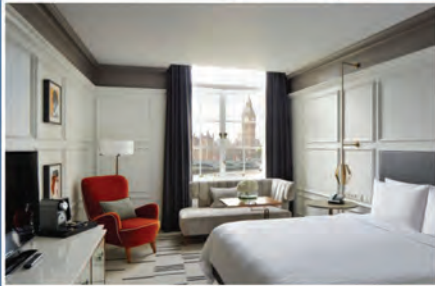
The inspiration for the design concept in The Capital Suite was drawn from Hyde Park and the nature and history surrounding the hotel.

With a full-size boardroom, luxurious private office and multiple en-suite bedrooms, this is the ultimate suite for the international business traveller. »



County Est. 1976
Contractors

Guestroom refurbishment specialists



*“The client conceptualises,
the architect articulates, and we deliver the dream.”*

County Contractors - Hotel Division

+44 (0)1934 523000

sales@countycontractors.co.uk

www.countycontractors.co.uk



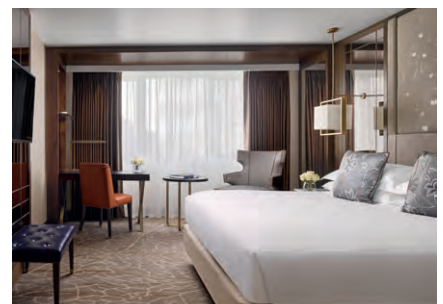
“Design touches contain tasteful homages to Hyde Park such as bespoke bronze handles evocative of tree branches for the cabinetry. Artwork and accessories draw on Hyde Park’s equine traditions and the historic location of the hotel.



The boardroom, which can be directly accessed through the suite’s private corridor, is the centrepiece of The Capital Suite, and can, as a result, be easily interconnected with any other rooms. On the opposite side, a private office and additional meeting room have been created, which can be linked to the boardroom, hence creating a fully equipped boutique office within the hotel.

By designing this specific combination of work and living spaces, RPW Design has successfully created a versatile space that affords the highest level of privacy with multiple luxury living and working spaces.

Positioned alongside the largest of the four Royal Parks which inspired RPW Design, The Capital Suite’s windows directly overlook the seasons unfolding outside. »



"We are delighted to have worked alongside County Contractors
on such a magnificent project."

R DUFFY & DAUGHTERS LTD

PLASTERING & DRY LINING COMPANY

Plastering | Dry Wall Systems | Partitioning
MF & Lay In Grid Ceilings | Floor Screeding

www.rduffyanddaughters.co.uk



07961 946390



01895 634989



info@rduffyanddaughtersltd.co.uk

"We are delighted to have worked alongside County Contractors
on such a magnificent project."

R DUFFY & DAUGHTERS LTD

WASTE MANAGEMENT COMPANY
LICENSED WASTE CARRIER

Skip Service | 20 & 40 Yard Roll On/Roll Off Skips
Wait & Load Service | Hazardous Waste | Asbestos Disposal
Demolition Waste Recycling | Scrap Metal



www.rduffyanddaughters.co.uk



07961 946390



01895 634989



info@rduffyanddaughtersltd.co.uk

Hotels

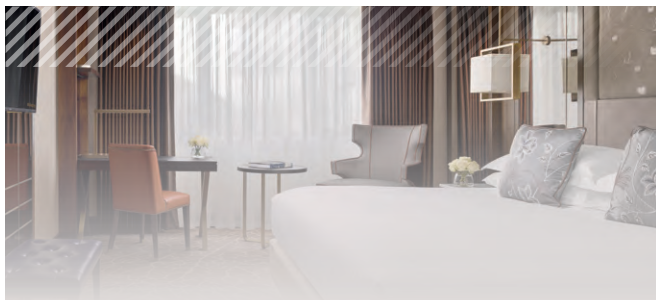
“Great attention was paid to the selection of naturally luxurious materials, such as soft leathers, stone and walnut timbers as a basis for the colour schemes, resulting in a classic, natural and relaxing environment suggestive of Hyde Park itself.



Great attention was paid to the selection of naturally luxurious materials, such as soft leathers, stone and walnut timbers as a basis for the colour schemes, resulting in a classic, natural and relaxing environment suggestive of Hyde Park itself.

Design touches contain tasteful homages to Hyde Park such as bespoke bronze handles evocative of tree branches for the cabinetry. Artwork and accessories draw on Hyde Park's equine traditions and the historic location of the hotel. ■





CONTRA CURTAINS LTD

Established in 1985, Contra Curtains Ltd supplies bespoke soft furnishings to the hospitality industry. Clients range from international hotel brands to individual bespoke properties, with works including nationwide refurbishments for Marriott Hotels & Resorts, IHG and GLH Hotels.

Recently completed projects include The Kimpton Fitzroy London, The Hard Rock Hotel, London and The Grand Hotel & Spa, York.

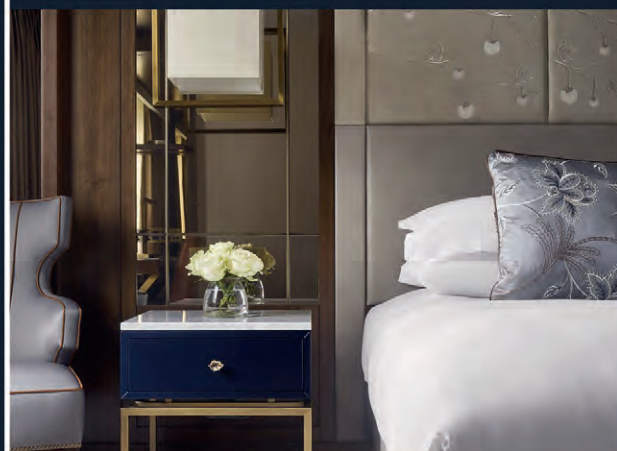
Contra Curtains Ltd Project Director, Chris Wicks, said: *"The Intercontinental London Park Lane presents luxury accommodation and facilities in the heart of Mayfair. Working with the project team we have provided beautifully crafted soft furnishings to the property's guestrooms and suites. We are very proud to be a chosen supplier to such an iconic property."* ■

To find out more, please visit www.contracurtains.com

CONTRA

SOFT FURNISHING SOLUTIONS

"WE ARE PROUD TO HAVE SUPPLIED SOFT FURNISHINGS TO INTERCONTINENTAL LONDON PARK LANE"



www.contracurtains.com

sales@contracurtains.com

01535 604 888/01535 657 086

Unit 5 Ryefield Court, Ryefield Way,
Keighley, BD20 0DL



Proud to have worked on the
**Intercontinental Hotel,
Park Lane, London**

BSG are high-quality hotel and commercial space experts, having focused on these sectors since 1987. **BSG** specialise in providing consultancy services to the construction industry.

01732 350557 | bsg@bsguk.com | www.bsguk.com

BUILDING SERVICES GROUP

Building Services Group (BSG) specialises in MEP for high end hotels, as well as commercial and residential projects.

The company has recently celebrated its 30th anniversary and is now the MEP Consultancy arm of the Syntegra Group. As well as being a highly-respected name in the UK hotel and hospitality sector, BSG has also been involved with a number of prestigious and complex schemes overseas.

Recently, the company has been involved with the refurbishment works at the InterContinental Hotel Park Lane. Having previously refurbished the building in 2005/06, BSG has now designed the 3rd and 4th floor guestroom project after recently completing the basement offices, Ella Canta Restaurant and first floor suites.

BSG has worked on InterContinental Hotel projects throughout Europe.

David Thomas, Director, said: *"This project continues the relationship we have with the IHG Group of Hotels. We pride ourselves in our hands on approach to our Projects and Clients."* ■

To find out more, please visit www.bsguk.com